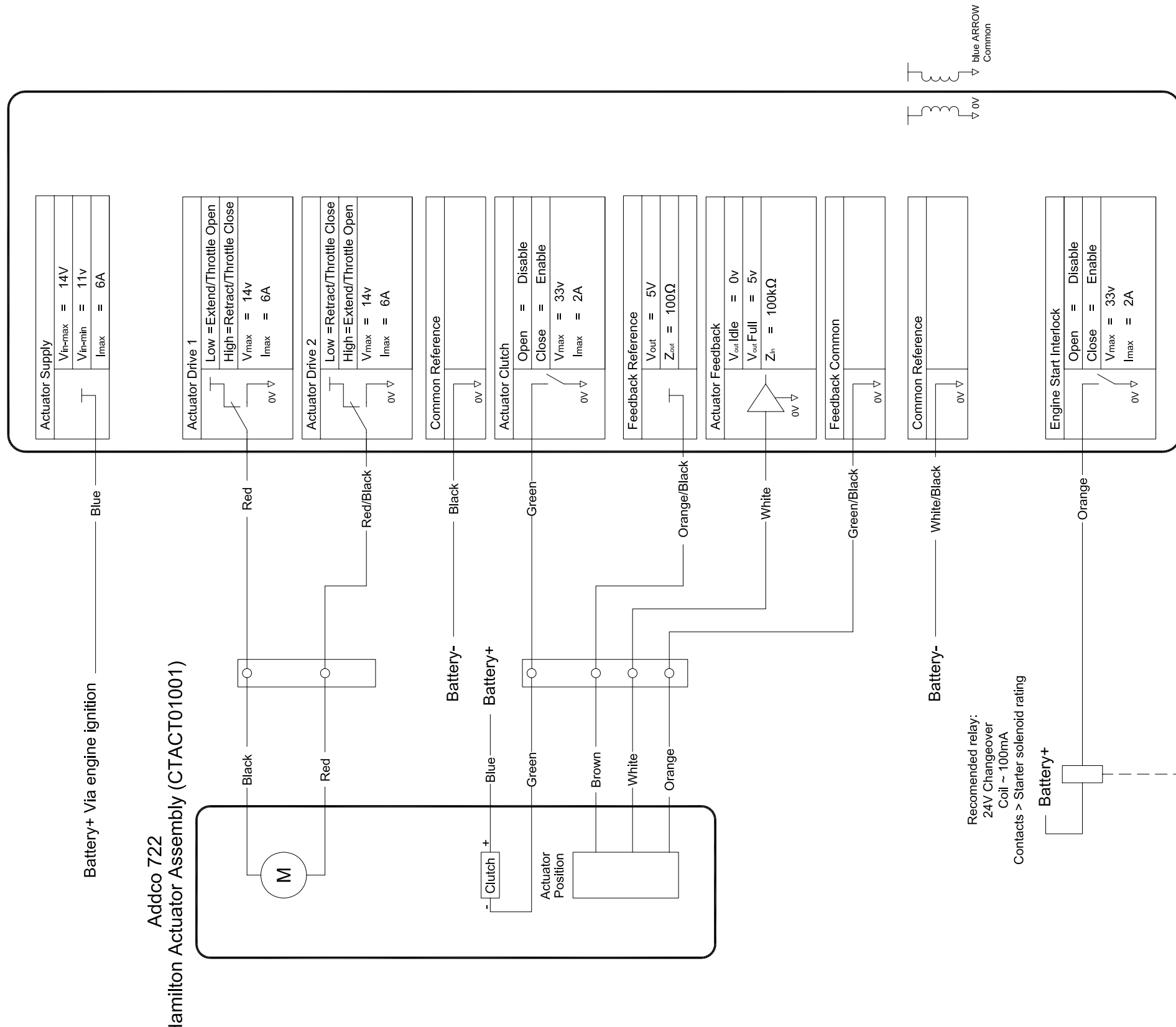
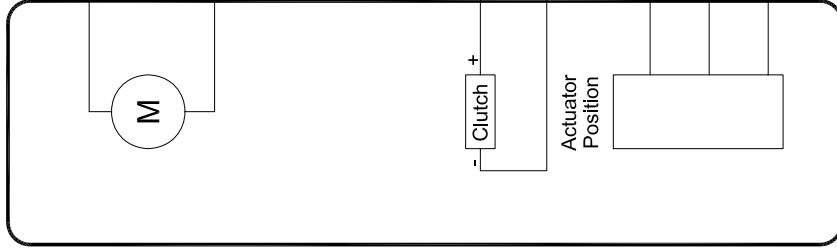


blue ARROW
Engine Interface Module



Battery+ Via engine ignition

Addco 722
C W F Hamilton Actuator Assembly (CTACT01001)



C. W. F. Hamilton & Co. Ltd Christchurch, New Zealand											
AMENDMENT ENGINE INTERLOCK BYPASS SWITCH ADDED				MATERIAL		Certified	Weight (kg)		√ = N9 EXCEPT AS STATED		
							Cast		UNLIMITED DIMENSIONS TO BE ±0.5		
							M/C		DESCRIPTION		
										blueARROW ENGINE SCHEMA A CONFIGURATION MECHANICAL ACTUATOR	
ECN	CL576	BY	F.K.	DATE	12.06.09	Approvals		Name		Date	
JET								F.K.		16.12.05	
This print is provided on a restricted basis and is not to be used in any way detrimental to the interests of C. W. F. Hamilton Ltd										Reviewed	
										DWG No 204933	
										D	

By-pass switch:
Must be fitted in single jet vessels
Optional in twin jet vessels

Alternatively an engine start interlock relay with lockable test option can be fitted (e.g. Omron MY2IN relay)

Manufacturer	Model	Note	Dmd Type	Feedback Type	Idle RPM	Full RPM	Backup EngDmd Mode
		Mechanical throttle - Retract to increase throttle	Actuator	Jet			IncDec

Note:
This schema refers only to mechanical throttle arrangements where retracting the actuator increases engine RPM and extending the actuator decreases RPM

